



## Crossways Camping Ministries

16 Tri-Park Way, Appleton, WI 54914

Phone 920-882-0023 Fax 920-882-9474

[registrar@crosswayscamps.org](mailto:registrar@crosswayscamps.org)

Thanks for signing up for our **Quilting Retreat at Waypost Camp, November 9-11, 2012!** We're so excited to offer this opportunity and hope that it will be a great experience for all! Here is information that will help you prepare for your arrival at camp.

**ARRIVAL & DEPARTURE:** We have lengthened the weekend this year. You may arrive as early as 1 pm. A light dinner will be provided from 6 – 6:30 pm. (**Arrivals after 6:30 pm will need to pack your own dinner**). Programming will officially begin at 7:30 pm. All retreat participants should check in at the main Lodge, located on the right when you pull into the main camp driveway. The weekend will wrap up at 3:00 pm on Sunday. (*Late arrivals should contact camp directly at the phone number listed on the back of this letter.*)

**LEADER & PROGRAM INFORMATION:** Crossways will have Pat Ehrenberg, an avid quilt teacher and quilter for over 25 years, will be available to answer your questions and offer advice! An **OPTIONAL** small project will be taught during the weekend. If you are interested, a supply list for materials is provided in this letter. Pat Ehrenberg will lead a small project, provide raffle prizes, and assist you with questions.

Each participant will be provided with a 6' or 8' table. **When possible** groups who register together will have tables arranged together. Tables will be assigned in advance. Please email [Sara@CrosswaysCamps.org](mailto:Sara@CrosswaysCamps.org) if you prefer to sit with someone different than your roommate request.

A few additional tables and ironing boards/irons will be available for all participants to have shared use of cutting and pressing space.

**DIRECTIONS:** Follow the map on the back of this sheet. We recommend that you **do NOT use** Google, Yahoo, or Mapquest. If you still have questions, please call camp directly.

**EMERGENCY PHONE NUMBER:** If someone needs to contact you during your stay at camp in the case of an emergency, Crossways' staff will take a message for you as phones are not available in your cabin.

**LODGING:** Quilting and lodging facilities are located in the SAME building at Waypost. Our maximum retreat size is 20 participants – this ensures ample space for quilting and for each participant to have a bottom bunk bed. Participants will be assigned rooms based on roommate requests and health concerns.

**SMOKING, DRUGS AND ALCOHOL:** Crossways Camping Ministries is a drug-free, smoke-free and alcohol-free environment. Use of drugs and alcohol are strictly forbidden. (An exception is made for communion wine.) Wisconsin state law prohibits smoking by anyone under the age of 18. If needed, Crossways' staff will direct anyone 18 or older wishing to smoke to a designated smoking area.

**FOOD SERVICE:** Crossways food service staff prepares and serves fresh, well-balanced meals during your stay. In order to plan for the retreat, it is important for us to know if you have any food allergies in advance of your arrival. Our cooks will plan for your arrival about two week ahead of time. If you have special dietary needs, health concerns, or mobility concerns please call camp directly as soon as possible after registration.

**HEALTH FORM:** State law requires that a completed health form be on file at camp in order for a camper (under 18) to attend a program at Crossways. Included is a Health Form for you to **BRING WITH YOU** to camp. Health forms for adults are strongly encouraged but not required.

**FREE Wireless internet is available for those  
who bring their laptops**



## Crossways Camping Ministries

16 Tri-Park Way, Appleton, WI 54914

Phone 920-882-0023 Fax 920-882-9474

[registrar@crosswayscamps.org](mailto:registrar@crosswayscamps.org)

### PACKING LIST

- Sewing Machine
- Quilting supplies (fabric, thread, etc.)
- Bible
- Bedding – Most beds are twin-sized, there is one queen sized bed in each room
- Towels
- Health form & medication
- Toiletries
- Flip flops/shower shoes
- Outdoor and Indoor shoes
- Casual, comfortable clothing
- Flashlight
- Battery Operated Alarm Clock – cell phones rarely get service at camp

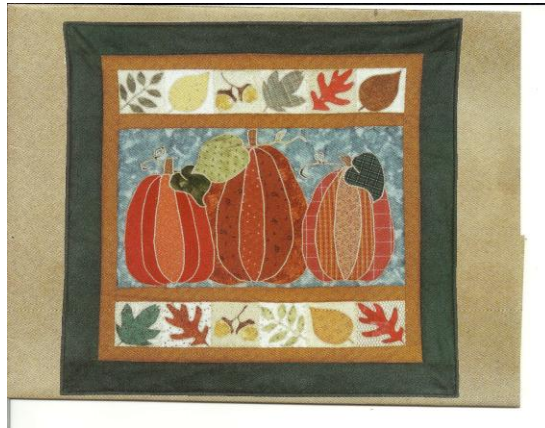
**Please don't bring pets, weapons, drugs, alcohol or anything expensive.** (Crossways insurance does not cover your personal items.)

**Optional Items to Enhance Your Retreat Experience:** *This list was compiled by previous retreat participants – they are not required items, but helpful suggestions.*

- Camera (memory card, film, batteries)
- Binoculars
- Water Bottle, non-alcoholic Beverages (a refrigerator is available for participants to put soda or bottled water inside)
- Slippers
- Extra Pillow – to maximize comfort while sitting in chairs
- Rug – to put beneath your feet (the flooring in the Lodge at Waypost is cement and tends to be cool)
- Chair – some people prefer to bring their own chair rather than those we provide at camp
- Extra light/extension cord – some prefer to have a personal Ott-lite/LED light for their table
- Money for Canteen
- Earplugs – to drown out sound at night
- Fan – to drown out sound at night
- Reading Material (a great novel, magazine, etc.) – for free time
- Writing Material (letters, envelopes, stamps, etc.) – for free time
- Outdoor Attire – for hiking on camp trails or roads during free time
- Bike & Helmet – for biking around the lake during free time
- DVD's – to watch a movie during free time
- ipods, MP3 players & headphones/speakers

## OPTIONAL PROJECT

Wall Hanging (24" x 24")



1/3 yard for pumpkin background  
assorted scraps, fat 1/8's, fat 1/4's in orange, golds, greens, browns for pumpkins, leaves, acorns  
1/4 yard for sashing and inner border  
1/2 yard for outer border  
3/4 yard backing  
1/4 yard binding  
3/4 yard batting

If you want to do machine stitching around the shapes you will need a light fusible product like Heat N' Bond or Steam a Seam

If you do not want to stitch around the shapes choose a ultra hold fusible with the same brand names.  
This also will make a beautiful project done with wool for the appliqué pieces.